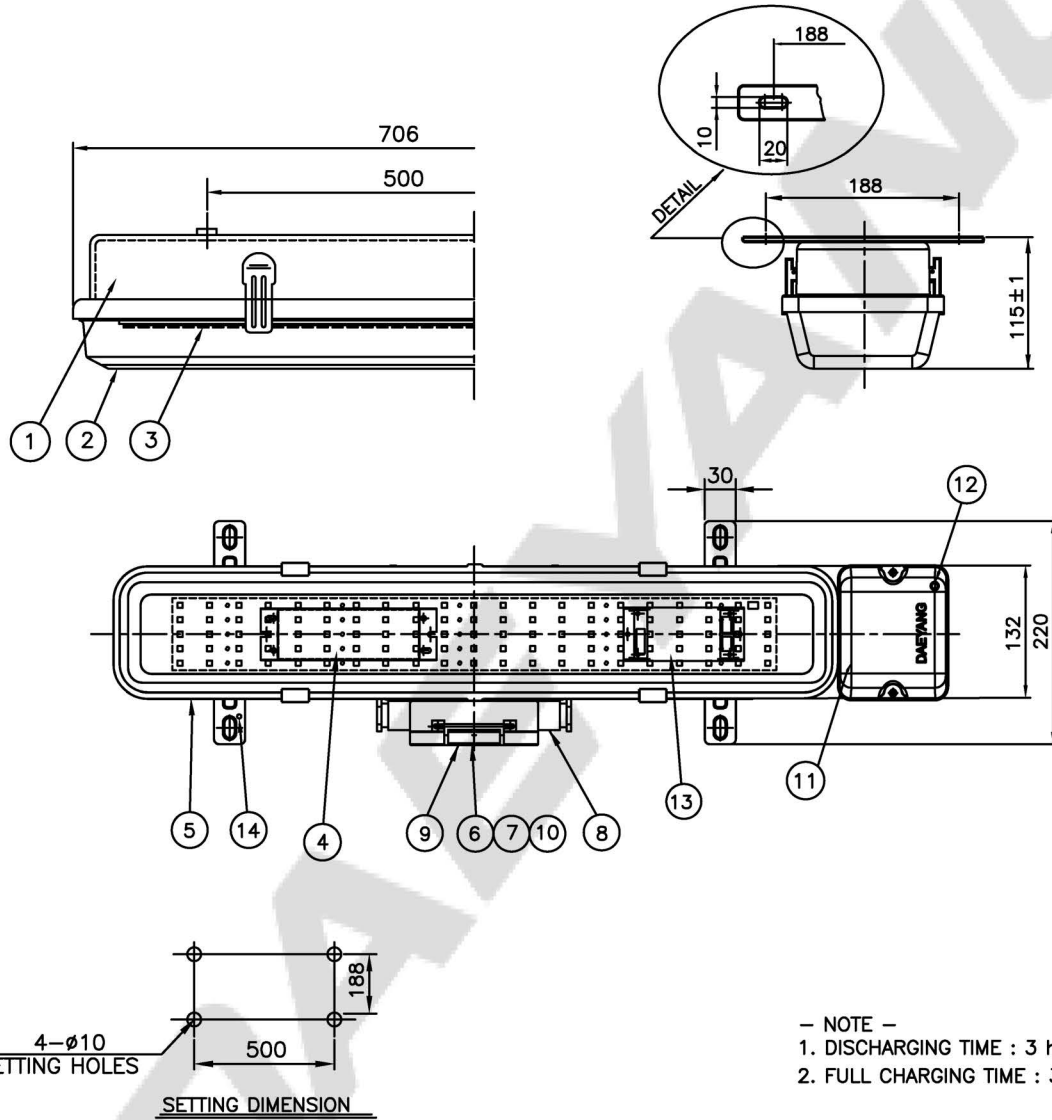


CAPACITY	SYMBOL/ SERIAL NO.	CIRCUIT DIAGRAM
AC100-240V, 50/60Hz		
25W		



- NOTE -
1. DISCHARGING TIME : 3 hrs.
2. FULL CHARGING TIME : 32 hrs.

14	OUTSIDE EARTH BOLT	STAINLESS STEEL 304	1	M5	7	TERMINAL BOX COVER	POLYCAR-BONATE	1	
13	EMERGENCY LED driver	—	1		6	TERMINAL BOX	POLYCAR-BONATE	1	
12	INDICATION LAMP	—	1		5	LATCH	STAINLESS STEEL 304	4	
11	BATTERY CASE	—	1		4	LED driver	—	1	
10	TERMINAL BLOCK	—	1	CLAMPING 4P	3	LED module	—	1	4,000±300K
9	INSIDE EARTH BOLT	STAINLESS STEEL 304	4	M4	2	GLOBE	POLYCAR-BONATE	1	MILKY
8	CABLE GLAND	NYLON	4	∅12.1~∅15.5	1	BODY	STEEL	1	
NO	NAME OF PARTS	MATERIAL	Q'TY	REMARKS	NO	NAME OF PARTS	MATERIAL	Q'TY	REMARKS

APPROVED	J. W. PARK	UNIT	MM
CHECKED	S. M. SON	SCALE	N/S
DRAWING	B. K. HWANG	COLOR	N-9.3
DATE	2022.06.07	IP	56

TITLE; LED CEILING LIGHT (SURFACE, BATTERY BACKUP TYPE) FOR MARINE USE			
MODEL NO.	LEB125WS-0550SWNMGLw15BuQC40	WEIGHT	5.48 Kg
DWG NO.	LO1480225	SHEET NO.	2

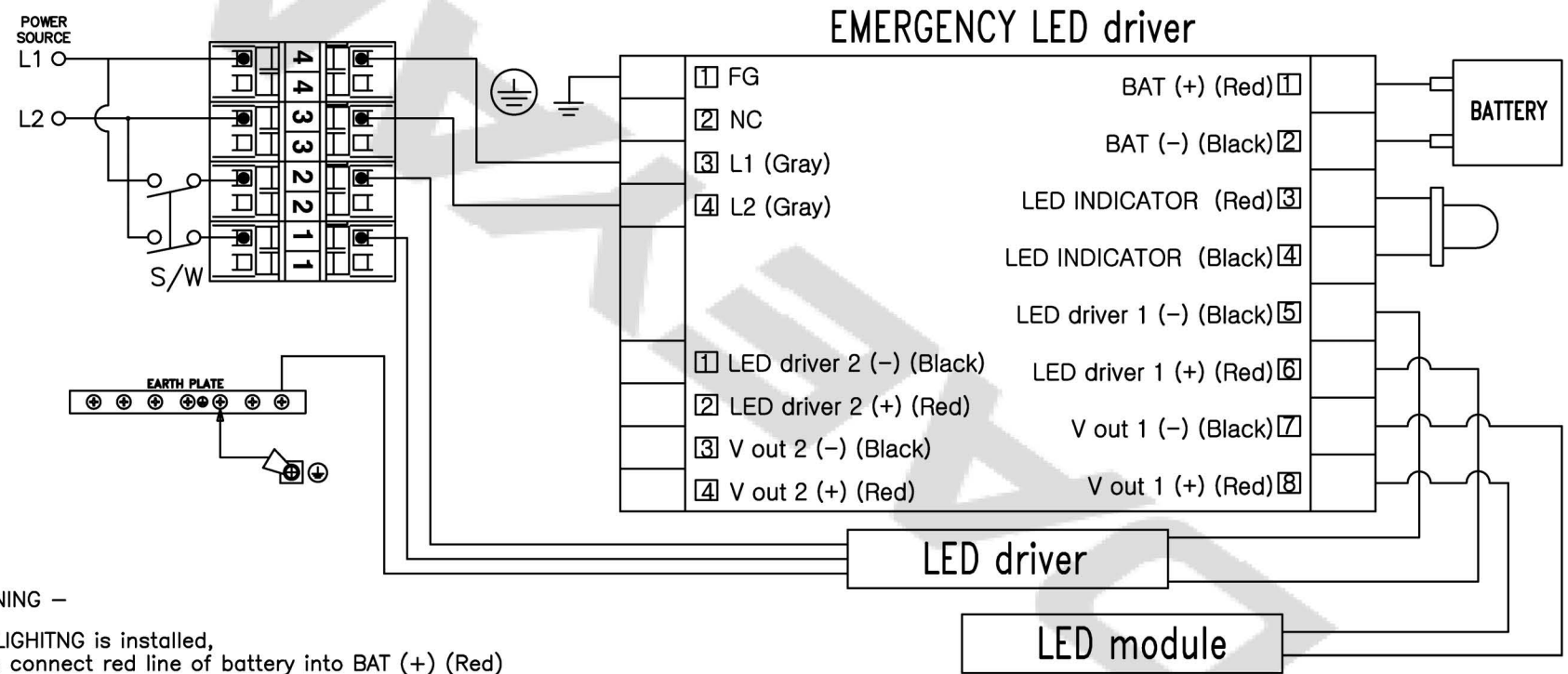


NO	CONTENT	DATE	REVISER	APPROVAL
△				
△				
△				

— NOTE —

* INDICATION LAMP COLOR STATUS

NO	LED		MODE
	GREEN	RED	
1	Steady	—	Full charged
2	—	Steady	Charging
3	—	—	Discharging
4	—	—	Battery fault



— WARNING —

1. After LIGHTING is installed, please connect red line of battery into BAT (+) (Red)
2. When the continuous power is not supplied, red line of battery into BAT (+) (Red) should be disconnected to avoid natural discharge of battery.
3. Please install switch for on/off LIGHTING.

TITLE: LEB125WS-0550SWNGLw15BuQC50	SCALE	N/S	UNIT	MM	NO.	REVISED
	PROJECT METHOD	⊕	WEIGHT	KG	△	
	APPROVED	B. K. KIM			MATERIAL	ASS'Y
	CHECKED				DWG NO.	
	DRAWN	B. I. KIM			SHEET NO.	2-A
	DATE	2016.02.02				

1) OPERATION / 작동

When AC power fails, the LED EMERGENCY driver immediately switches to the discharging mode, operating two LED modules at a reduced lumen output for a minimum of 90 minutes(50W) or 3 hours(25W).

When AC power is restored, the LED EMERGENCY driver automatically returns to the charging mode.

·Charging time : minimum 32hrs

·Discharging time : LED25W, 2 LED modules – 3hrs / LED50W, 2 LED modules – 90mins

AC 전원이 공급되지 않을 때, LED 비상 드라이버는 즉시 방전 모드로 전환됩니다.

두 개의 모듈이 최소 90분(50W) or 3시간(25W) 동안 감소된 광속 출력으로 작동하며 AC 전원이 다시 공급되면, LED 비상 드라이버는 자동적으로 충전 모드로 전환됩니다.

·충전시간 : 최소 32시간

·방전시간 : LED25W, 2 LED 모듈-3시간 / LED50W, 2 LED 모듈-90분

2) INDICATOR LAMP COLOR STATUS / 상태 표시 램프 색상

The indicator shows the degree of battery charging and discharging.

표시기는 배터리 충전 및 방전 상태를 보여줍니다.

NO	LED COLOR STATUS		MODE
	GREEN	RED	
1	Steady	-	Fully charged
2	-	Steady	Charging
3	-	-	Discharging
4	-	-	Battery fault

순번.	LED 색상 상태		작동모드
	녹색	적색	
1	점등	-	완전 충전
2	-	점등	충전 중
3	-	-	방전 중
4	-	-	배터리 결함

3) DIRECTIONS FOR THE USE / 사용 시 주의사항

Wiring should be implemented strictly following manufacturer's drawing; any damage caused by improper wiring is not covered by warranty policy.

Test of emergency condition, such as battery discharging time test, should be executed when the battery is fully charged.

The battery connector must be disconnected from battery during construction & test period of vessel, where frequent cut-off of the power source could be happened.

And, Please connect a separate battery connector just before the sea-trial or when normal operation only.

Otherwise, the performance and lifespan of the battery will be significantly deteriorated.

결선은 공급자의 도면에 따라서 엄격하게 시행되어야 하며, 부적절한 결선으로 야기된 위험은 보증 정책이 적용되지 않습니다.

배터리 방전시간 시험과 같은 비상상태에서의 시험은 배터리가 완전 충전되었을 때 실행해야 합니다.

배터리는 커넥터는 전원이 자주 차단되는 선박의 공사 & 시험기간 동안에는 배터리로 부터 분리해야 합니다. 그리고, 분리된 배터리 커넥터는 시운전 직전 또는 정상 사용 시에 연결하십시오. 그렇지 않을 경우, 배터리의 성능과 수명은 현격하게 저하 됩니다.)

APPROVED	B. K. KIM	UNIT	MM
CHECKED		SCALE	N/S
DRAWING	B. I. KIM	COLOR	-
DATE	2016.02.01	IP	-

TITLE;

LED BATTERY BACKUP
Information Sheet
(LED 25W/50W)

 **DAEYANG**

SHEET NO. 2-B